



Canterbury Crescent, Brixton, SW9

2 bedroom flat - purpose built for sale

£575,000

Leasehold

Property Details

Almost 800 square feet of internal space has been well-utilised to create two generous double bedrooms, a fantastic reception, and a stylish separate eat-in kitchen. The property also benefits from access to a sunny, low-maintenance shared garden. Period features throughout add to the endearing character of this stylish and well-located flat. High ceilings and large windows flood each room with natural light and add to the sense of space. The handsome reception room at the front of the building boasts a stunning feature fireplace and fantastic dimensions for lounging and entertaining. The separate kitchen is finished with subway back-splash tiling, modern integrated appliances, and abundant storage options. The kitchen also offers plenty of space to dine and feeds through to a handy, separate utility room. Both bedrooms are genuine doubles that are perfect for sharers as they are fairly equal in size. The bedrooms sit adjacent to a contemporary family-sized bathroom. The entire block was renovated with high-quality workmanship 15 years ago, installing new double glazing and sound insulating all the flats, creating low energy costs.

Council tax band A EPC rating C (72)

Features

- Two double bedrooms
- Almost 800 square feet of internal space
- Victorian mansion block
- Bright, airy and characterful
- Shared garden
- Double-glazing and refurbished exterior
- Lockable bike storage
- Situated in the heart of Brixton
- A short walk to Brixton Village and the tube station



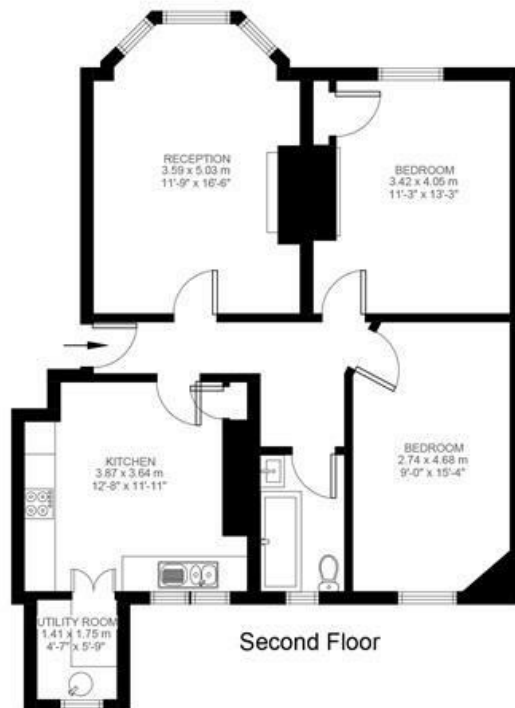


Canterbury Crescent, Brixton, SW9

Canterbury Crescent, Brixton, SW9

2 Bedroom Flat

Approximate internal area: 790 sqft 73 sqm



Property has access to shared garden
Not to scale or in actual location.



While we do try our very best, floor plans are produced as a guide only and we take no responsibility for the precise accuracy with which any property is represented.

Canterbury Crescent, Brixton, SW9

